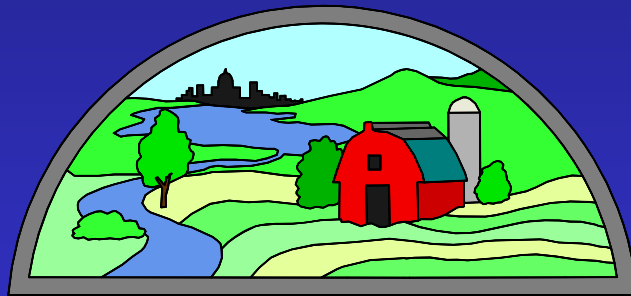


**Dane Co. Liquid Manure
Ordinance for Winter Applications...or
“Where To Go When It Snows”**



Patrick J. Sutter, County Conservationist
Dane County Land & Water Resources Department
Land Conservation Division



Outline

- **Dane County Winter Spreading Ordinance was amended to existing storage ordinance 12/12/05.**
- **Why Dane County opted to go the ordinance route versus the voluntary approach.**
- **Winter Spreading Plan Requirements.**
- **Highlights and challenges of having a Winter Spreading Ordinance at the County Level.**
- **Conclusions**

Expanding Livestock Operations



Daily haul of solid manure still exists but is not near as prevalent.



Conversion from
solid to liquid
manure operating
systems



Liquid manure application
is the growing trend.



Winter spreading of liquid manure has become a common practice.



Historical Events

- **2 major manure runoff events in February 2005**
 - **Fish kill, West Branch Sugar River**
 - **Significant amount of nutrient loading the Lake Mendota and other local streams & lakes.**

February 2005 Manure Runoff from Winter Spreading







Manure Task Force Convened

- **Dane County Land Conservation Committee and Lakes & Watershed Commission established a 9-member task force committee shortly after those two incidents.**
- **The group met 6 times during the months of April and May, 2005. Final report was completed July 7, 2005.**
- **Task Force developed recommendations which ultimately were incorporated into the county ordinance.**
- **Members consisted of a mixture of Farmers, Environmental Interest Groups and County Board Supervisors**

Monitoring & Accountability



Winter Spreading Manure Permit

Applies to agriculture producers who apply stored, pumpable liquid manure on snow-covered, frozen or ice-covered cropland

Winter Spreading Plan

- 1) Emergency Plan
- 2) Conservation Practices
- 3) Spreading Log
- 4) Maps

Emergency Action Plan for Manure Runoff/Spills

Farm Name: _____

Owner/Operator: _____

Farm Address: _____

Farm Location (T.R. 1/4 Section): _____

Emergency Responder	Name	Telephone
Farm Contact		
Manure Hauler		
Off-farm Equipment Operator		
Land Conservation Staff		

Manure Runoff/Spills Emergency Steps:

1. Stop the flow

- Incorporate manure if possible
- Till ground ahead of manure flow to increase infiltration
- Divert manure away from streams, ditches, waterways, concentrated flow areas, lakes, ponds, tile inlets, sinkholes and wells

2. Contact DNR Spill Hotline at 1-800-943-0003. Make sure you talk to a person. If you are unable to locate a person, contact the County Sheriff

3. Contact Dane County Land Conservation at 608-224-3730.

4. Clean up all accumulated manure.

5. Document your actions on the back of this page.

Documented Actions for Emergency Plan for Manure Runoff Spills.

Action Taken	Comments
1. When manure was applied? <i>(date/time)</i>	
2. What was manure application rate? <i>(gallons/acre)</i>	
3. Where was manure applied? <i>(ex. closest road name, field description/location)</i>	
5. Steps taken to stop runoff? <i>(for examples, see Manure Runoff Spills Emergency Steps on front of this page)</i>	
4. Who was contacted and when? <i>(name, agency, date/time)</i>	
6. List any personnel that authorized manure clean up steps. <i>(name, agency)</i>	
7. Other comments and/or actions?	







Conservation Practices:

- a) **Install a grassed buffer, at least 30 feet wide, along a stream, drainage ditch, or lake**
- b) **Install a grassed buffer in a field**
- c) **Install contour strip**
- d) **Employ contour farming practices and leave all residue on the surface**
- e) **Employ no-till practices with all crop residue from the previous year**
- f) **Create and maintain terraces or diversions to reduce slope length**
- g) **Chisel plowing the field prior to the ground freezing**
- h) **Other conservation practices such as, but not limited to, intermittent strip spreading, approved by Land Conservation Department Staff**

Winter Manure Spreading Plan Maps

Spreading Rates Based on Slope:

0-2% slope	7,000 gal/acre application rate	(Blue on the Map)
3-6% slope	6,000 gal/acre application rate	(Green on the Map)
7-12% slope	5,000 gal/acre application rate	(Orange on the Map)
>12% slope	Spreading Prohibited	(Red on the Map)

Areas Where Spreading is Prohibited:

- Waterways or other channelized flow
- Non-harvested vegetation
- Within 30 feet on either side of a waterway
- Within 200 feet upslope of a well, tile inlet, sinkhole, gravel pit or fracture bedrock at the surface
- Within 300 feet of a stream or drainage ditch
- Within 1,000 feet of a lake

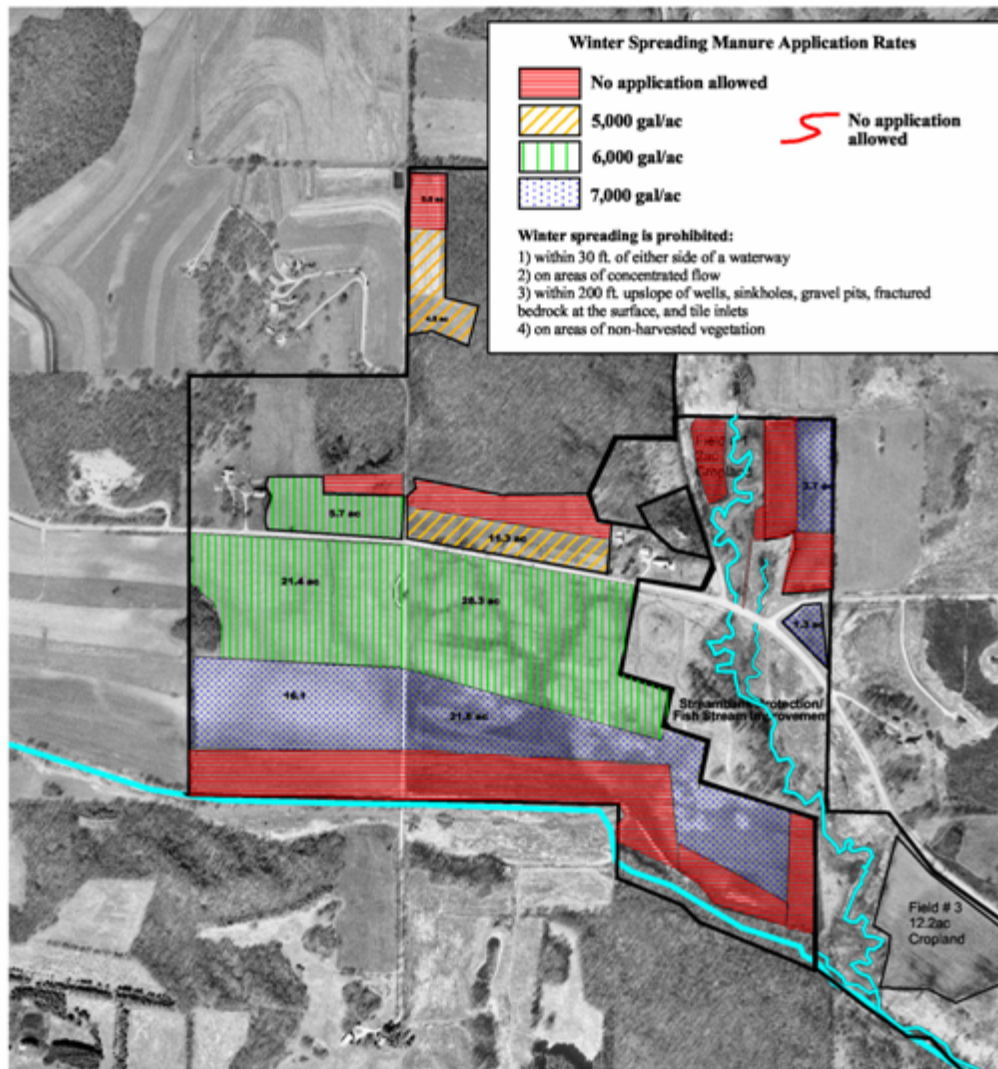
Winter Manure Spreading Plan

Maximum rates of stored pumpable manure that can be applied on snow covered or frozen ground.

Owner: Dane County Parks
Operator:

Township(s): Springdale
Section(s): 33
Tract(s): 1

Completed by: Lambert
Phone: (608) 224-3730
Date: 7-19-06



800 0 800 Feet

Pros & Cons

Cons:

- > **Timing – November 1, 2006**
- > **Other Commitments**

Pros:

- > **Education**
- > **Farmers taking the time to think where and when they spread manure**

Dane County Web Site

[http://www.danewaters.com/management/
ManureTaskForce.aspx](http://www.danewaters.com/management/ManureTaskForce.aspx)